



**DU7099Z+**  
**DU7199Z+**  
**DU7299Z+**

Energy-efficient laser projector  
for large venues

## Overview

The newly designed DU7×99Z+ series is a most efficient WUXGA large venue projector and includes DU7099Z+, DU7199Z+, and DU7299Z+ three different levels of brightness with versatility in applications. This series offers incredibly brightness up to 10,000 lumens and supports motorized lenses, with lens positioning memory to cater for any installation requirements.

Its maintenance-free reliable operation for up to 30,000 hours with constant brightness and color uniformity by the optional IP6X sealed engine design, making this series perfect for large venues, such as auditoriums, lecture halls, sports arenas, and both rental and staging markets.



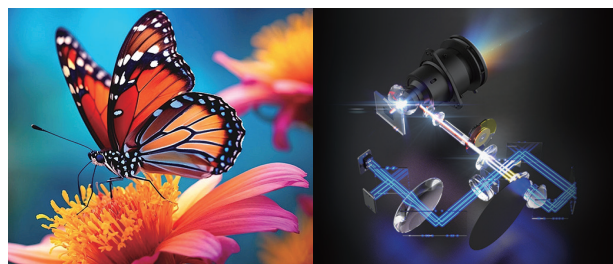


## Key feature



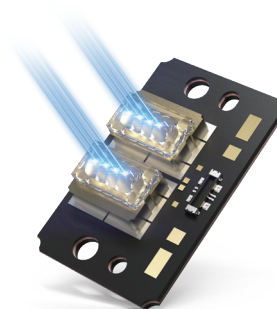
### Brightness and Color Performance

With Vivitek's latest laser technology, DU7×99Z+ series features high brightness up to 10,000 lumens and a high 3,000,000: 1 contrast ratio to create the most amazing picture performance.



### High Efficiency

The DU7×99Z+ series uses the latest laser light source technology to enhance brightness, featuring the lowest power consumption and high efficiency in the market. Compared to previous projectors, this series has saved up to 45% of power consumption.



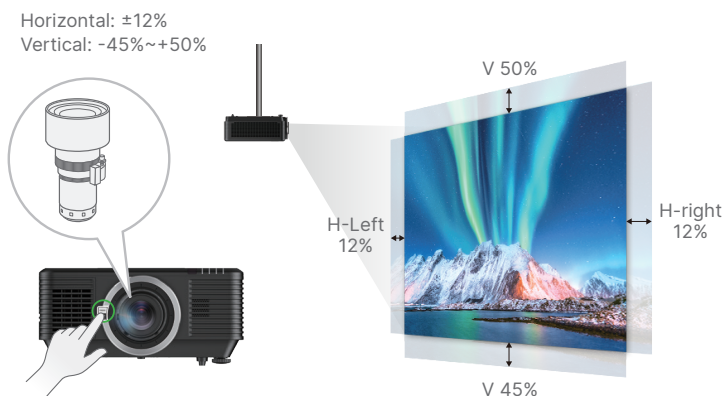
**45% <sup>⤴</sup>**  
Power Consumption

**18% <sup>⤴</sup>**  
Efficiency

**Optional Motorized Lenses & Lens Shift movement**



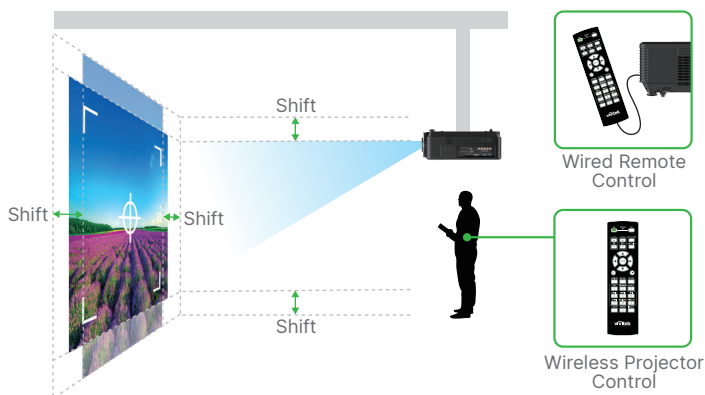
The previous generation of models used manual lenses, the new DU7×99Z+ series supports eight motorized lenses and offer larger Lens Shift movement to enhance installation flexibility.



**Lens Position Memory**



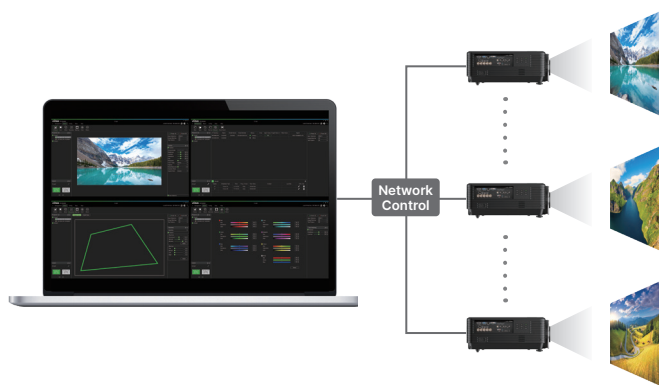
The DU7×99Z+ series comes with powered lens shift (horizontal / vertical) for easy adjustment and positioning flexibility. Lens Positioning Memory also offers quick recall of user-defined lens positions (lens shift) for easy setup to ensure perfectly proportioned images.



**PJ-Control Tool**



Vivitek's PJ-Control software is a tool for controlling Vivitek projectors. It can be used to manage multiple projectors, helping users control viewing options, settings, and scheduling, and it also allows for the adjustment of display features over a network.



**Constant Brightness**



With built-in color sensor technology, these projectors can automatically adjust the lighting to maintain constant and stable brightness over a long period of time.

**24/7 Operation**



Vivitek's laser light source is good for 30,000 hours of operation in Eco Mode and support continuous 24/7 operation. It delivers high stability and reliability for commercial applications.



## Specifications

Model	DU7099Z+	DU7199Z+	DU7299Z+
Display Type	DLP Single Chip 0.67"		
Brightness**	8,000 Lumens	9,000 Lumens	10,000 Lumens
Native Resolution	WUXGA (1920×1200)		
Dynamic Contrast Ratio	3,000,000:1		
Light Source	Laser		
Light Source Life (Normal / Eco)	20,000 / 30,000 hrs		
Aspect Ratio	16:10		
Throw Ratio*	1.54~1.93 : 1		
Zoom Ratio*	1.25:1		
Keystone Correction	Vertical: ±30°, Horizontal ±30°		
Lens Shift Range	Vertical: Bottom 50% to Top 70%, Horizontal: Left 15% to Right 15%		
Projection Size*	32.1" ~ 500"		
Speaker	10W x2		
Horizontal Frequency	15, 31 ~ 91.4kHz		
Vertical Frequency	24 ~ 30Hz, 47 ~ 120Hz		
3D Compatibility	Yes		
I/O Ports	HDMI 2.0 x2 DVI-D x1 VGA-In (15pin D-Sub) x1 Component (5 BNC) (RGBHV) x1 Audio-In (Mini-Jack) x1 VGA-Out (15pin D-Sub) x1 RJ45 (LAN ) x1, RJ45 (HDBaseT) x1 RS-232-in x1 RS-232-out x1 3D Sync-in (VESA) x1 3D Sync-in Out (VESA) x1 USB Type A Power (5V /1.5A) x1 USB (Service) x1 Audio-Out (RCA) x1 12v Trigger (3.5mm Jack) x1 Remote Jack (wire remote) In x1 Remote Jack (wire remote) Out x1		
Security Solutions	Kensington® Security Slot, Security Bar, Keypad Lock		
Projection Method	Table Top, Ceiling Mount (Front or Rear)		
Dimensions (WxDxH)	470 x 517 x 202 mm (18.5" x 20.3" x 7.9")		
Weight	20.6 kg (45.4 lbs)	20.6 kg (45.4 lbs)	23.5 kg (51.8 lbs)
Power Supply	AC 100-240V, 50/60Hz		
Power Consumption	465W (Normal Mode) <0.5W (Standby Mode), <2W (LAN Standby Mode)	540W (Normal Mode) <0.5W (Standby Mode), <2W (LAN Standby Mode)	575W (Normal Mode) <0.5W (Standby Mode), <2W (LAN Standby Mode)
Standard Accessories	AC Power Cord, Remote Control w/Batteries, Lens Cap, Documentation Kit		
Optional Accessories	Interchangeable Lens Options (x8), VWD-01		

\* Using Standard Lens

\*\* Brightness specifications are in compliance with ISO 21118 standards



Visit [www.vivitekc.com](http://www.vivitekc.com) for more product info  
Copyright (c) 2024 Delta Electronics, Inc. All Rights Reserved

A brand of  DELTA